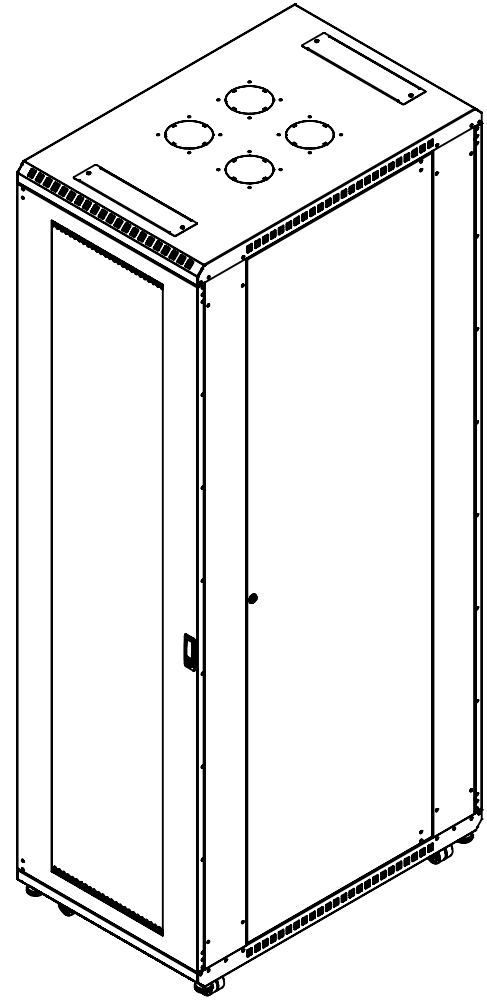


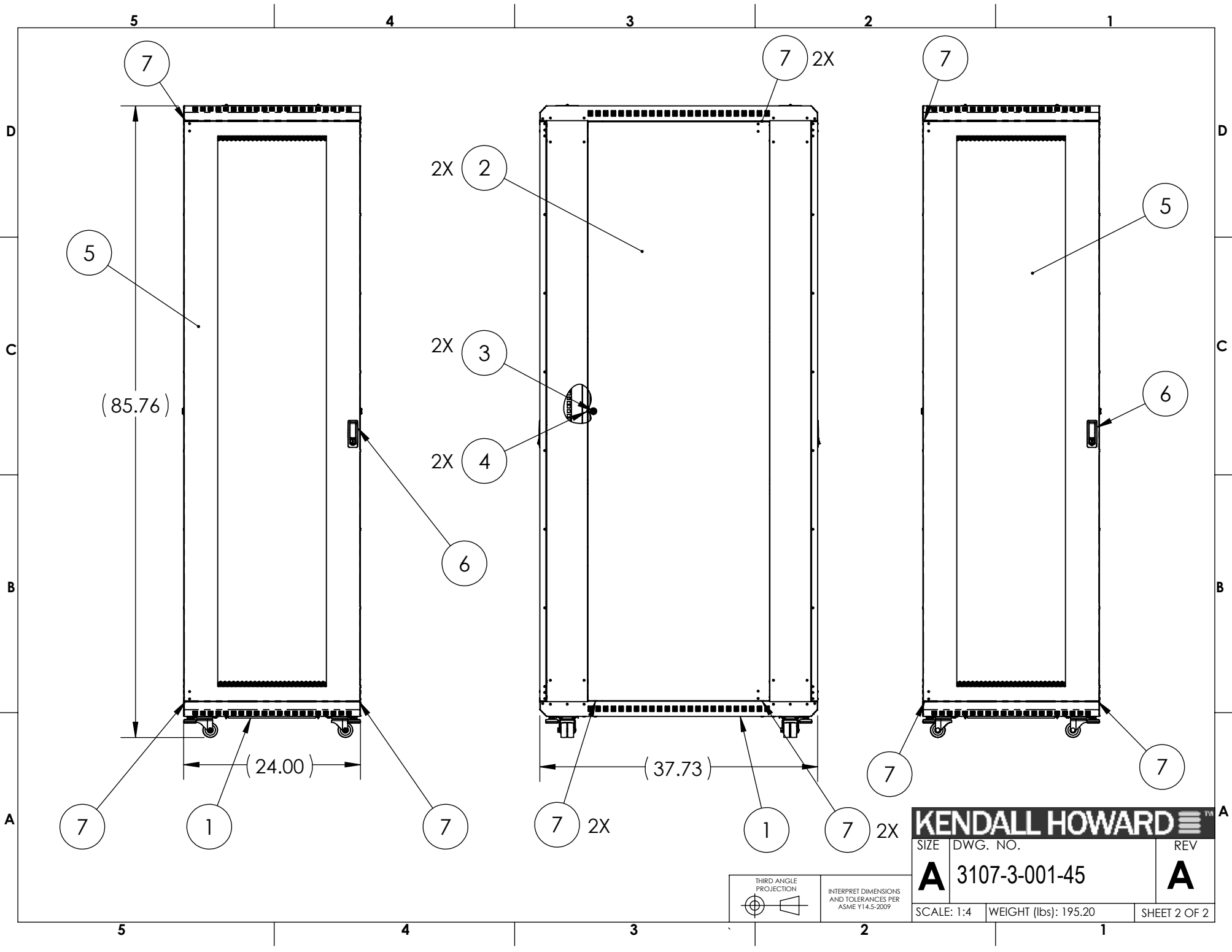
| ITEM NO. | PART NUMBER | DESCRIPTION                                  | QTY. |
|----------|-------------|--|------|
| 1        | K102937     | COMMON FRAME- 45U LINIER 36 INCH DEEP        | 1    |
| 2        | K102935     | SIDE DOOR ASSEMBLY - 45U LINIER 36 INCH DEEP | 2    |
| 3        | cp-1195     | LOCK- 7/8" BARREL                            | 2    |
| 4        | cp-1197     | CAM, LOCK- .575 X .913                       | 2    |
| 5        | K102942     | VENTED DOOR ASSY- 45U LINIER FS              | 2    |
| 6        | cp-1020     | HANDLE, COMPRESSION- LOCKING                 | 2    |
| 7        | cp-1024     | BEARING, HINGE- PLASTIC                      | 12   |



|   |   |   |  |   |
|---|---|---|--|---|
| <p><b>KENDALL HOWARD CONFIDENTIAL</b><br/>THE INFORMATION CONTAINED IN THIS DRAWING IS THE SOLE PROPERTY OF KENDALL HOWARD. ANY REPRODUCTION IN PART OR AS A WHOLE WITHOUT THE WRITTEN PERMISSION OF KENDALL HOWARD IS STRICTLY PROHIBITED.</p> <p><b>MANUFACTURING COMMENTS:</b></p> | <p><b>UNLESS OTHERWISE SPECIFIED, ALL DIMENSIONS ARE IN INCHES.</b></p> <p>TOLERANCES:<br/>FRACTIONAL: ±1/8<br/>ANGULAR: ±1°<br/>TWO PLACE DECIMAL: ±.03<br/>THREE PLACE DECIMAL: ±.010<br/>HOLE: ±.005</p> | <p><b>APPROVAL</b></p> <p>DRAWN BS 11/14/2023</p> <p>DESIGN BS 11/16/2023</p> <p>ENG APPR</p> <p>MFG APPR</p> | <p><b>DATE</b></p>   |   |
|   | <p><b>MATERIAL:</b> SEE BOM</p>   | <p><b>LEGACY Part Number:</b></p>   | <p><b>KENDALL HOWARD</b></p>   |   |
|   | <p><b>SURFACE AREA (in²):</b> NA</p> <p><b>FINISH ID:</b> NA</p> <p><b>FINISH DESCRIPTION:</b> NA</p>   | <p><b>CLASSIFICATION:</b></p>   | <p><b>TITLE:</b><br/><b>45U LN FS- VENTED DOOR / VENTED DOOR- 36 INCH DEEP</b></p> |   |
|   | <p>DO NOT SCALE DRAWING</p>   | <p>THIRD ANGLE PROJECTION</p> <p>INTERPRET DIMENSIONS AND TOLERANCES PER ASME Y14.5-2009</p>                  | <p>SIZE</p> <p><b>A</b></p>  | <p>DWG. NO.</p> <p><b>3107-3-001-45</b></p> |

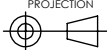
|                |                     |            |              |                |
|----------------|---------------------|------------|--------------|----------------|
| 199            | Initial Release     | BS         | 11/16/2023   | BS             |
| <b>ECO No:</b> | <b>Description:</b> | <b>By:</b> | <b>Date:</b> | <b>App By:</b> |

|                   |  |                             |  |                     |  |
|-------------------|--|-----------------------------|--|---------------------|--|
| <p>SCALE: 1:4</p> |  | <p>WEIGHT (lbs): 195.20</p> |  | <p>SHEET 1 OF 2</p> |  |
|-------------------|--|-----------------------------|--|---------------------|--|



**KENDALL HOWARD** 

|            |                      |              |
|------------|----------------------|--------------|
| SIZE       | DWG. NO.             | REV          |
| <b>A</b>   | 3107-3-001-45        | <b>A</b>     |
| SCALE: 1:4 | WEIGHT (lbs): 195.20 | SHEET 2 OF 2 |

THIRD ANGLE PROJECTION 

INTERPRET DIMENSIONS AND TOLERANCES PER ASME Y14.5-2009